

Pennywise

Factory-built homes from Russell Versaci

English colonists who settled the Chesapeake Tidewater created a plantation economy built on large tracts of land. The Saddler is based on the traditional plantation house, the centerpiece of the farm. Today the style is often called Williamsburg colonial.



The Saddler

Summary

4 bedrooms, 3 1/2 baths
Finished area: 3058 sf

First floor: 1908 sf
Second floor: 1150 sf

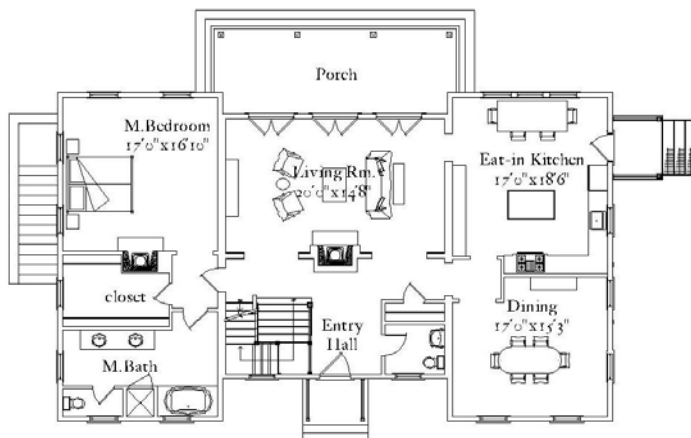
Covered porches: 280 sf
Unfin. basement: 1850 sf



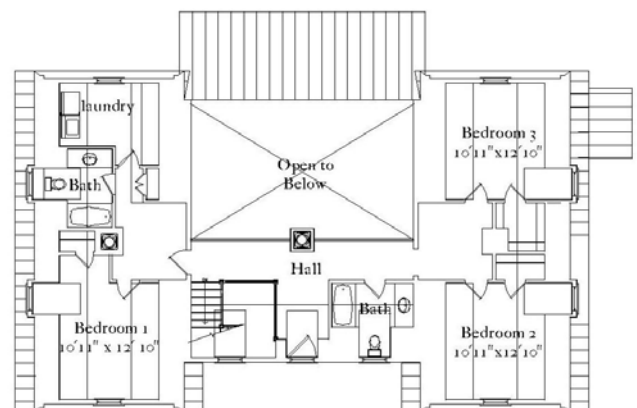
front



rear



first floor



second