

Pennywise

Factory-built homes from Russell Versaci

The Greek Revival began in the early 1800s, spreading from the east throughout the south and midwest. The Glazier is a Greek Revival farmhouse with details that include a columned entry porch, cornice with frieze band and pilasters, and entry portico with transom and sidelights.

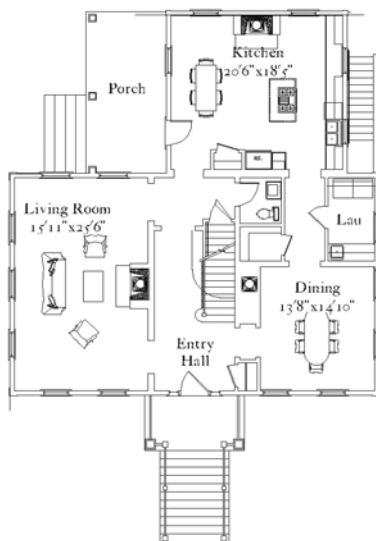
The Glazier



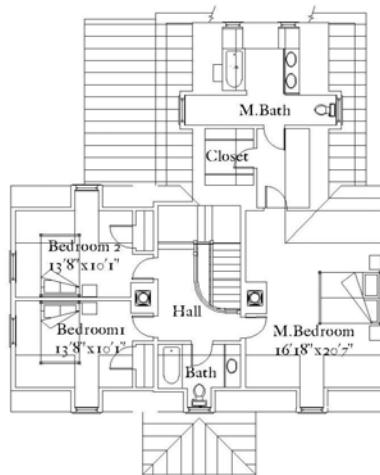
rear



front



first floor



second floor

Summary

3 bedrooms, 3 1/2 baths

Finished area: 2631 sf

First floor: 1474 sf

Second floor: 1157 sf

Covered porches: 244 sf

Unfin. basement: 1401 sf