

Pennywise

Factory-built homes from Russell Versaci

The Chandler is an 18th-century, hall-and-parlor house with a double piazza, a style that originated in the English colonies in the Tidewater Lowcountry. These graceful homes were built on plantations and in towns in coastal areas from Virginia to Georgia.

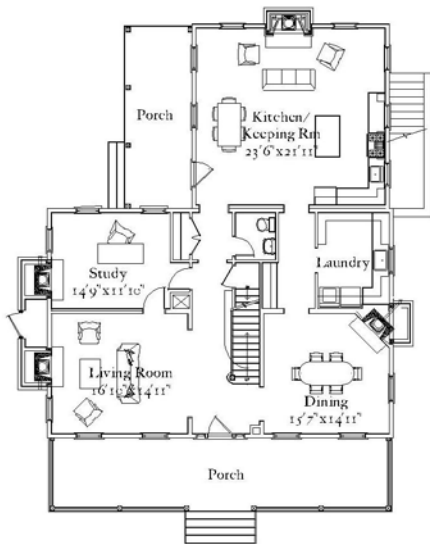
The Chandler



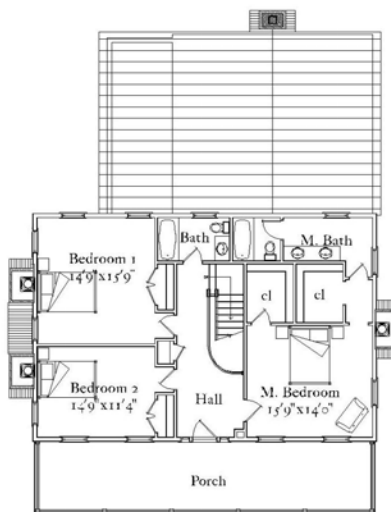
rear



front



first floor



second floor

Summary

3 bedrooms, 2 1/2 baths
Finished area: 2808 sf

First floor: 1674 sf
Second floor: 1134 sf

Covered porches: 964 sf
Unfin. basement: 1613 sf