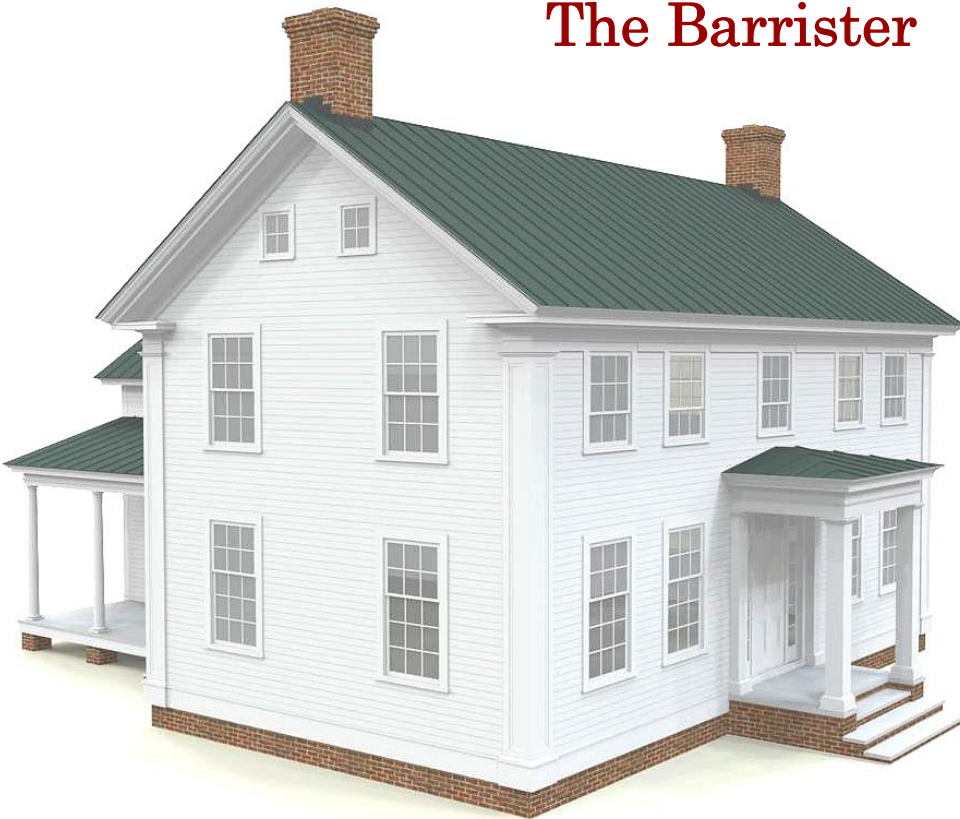


Pennywise

Factory-built homes from Russell Versaci

In the early 1800s Greek Revival became the national style of our young country. Even simple New England farmhouses began to showcase classical details, such as the columned entry portico and cornice with frieze band and pilasters on the Barrister.

The Barrister



rear



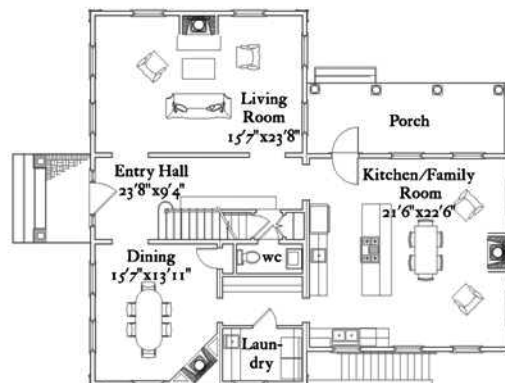
front

Summary

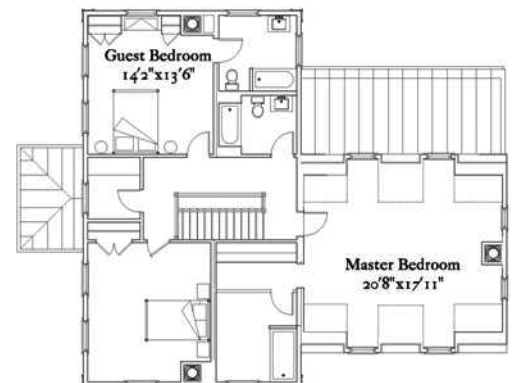
3 bedrooms, 3 1/2 baths
Finished area: 2874 sf

First floor: 1454 sf
Second floor: 1420 sf

Covered porches: 264sf
Unfin. basement: 1412 sf



first floor



second floor