

Pennywise

Factory-built homes from Russell Versaci

In the late 1700s the neoclassical style was popularized by Thomas Jefferson, and it spread throughout the Southern Piedmont. Formal details on our Southern Piedmont Cottage include a hipped roof, entablatures and pilasters, and a gabled front porch.

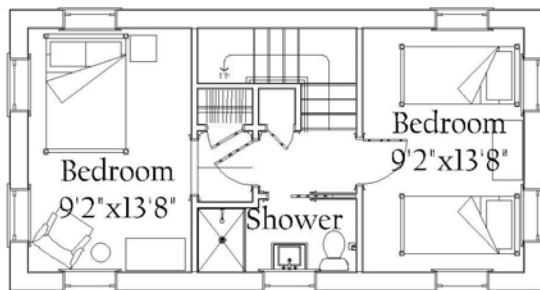
Southern Piedmont Cottage



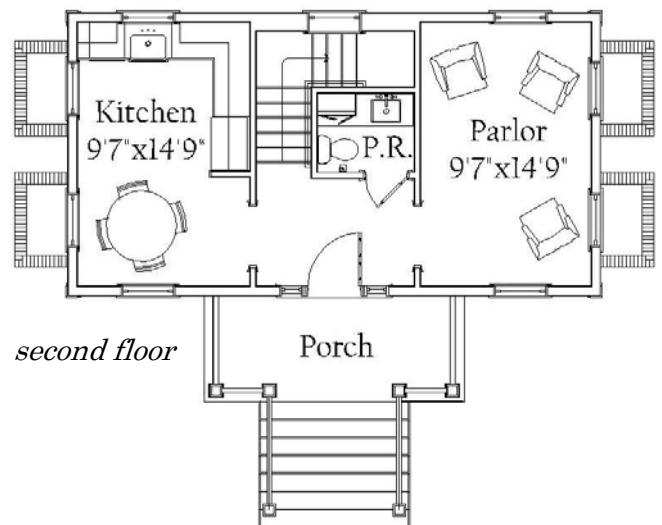
rear



front



first floor



second floor

Summary

946 sf

2 bedrooms, 1 bath

First floor: 473 sf

Second floor: 473 sf

Porches: 87 sf