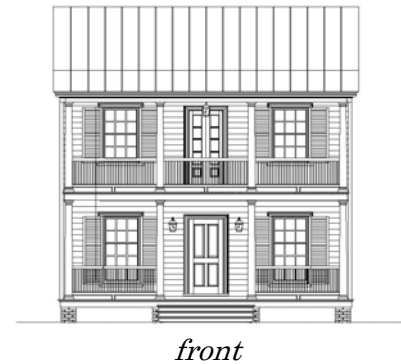


Pennywise

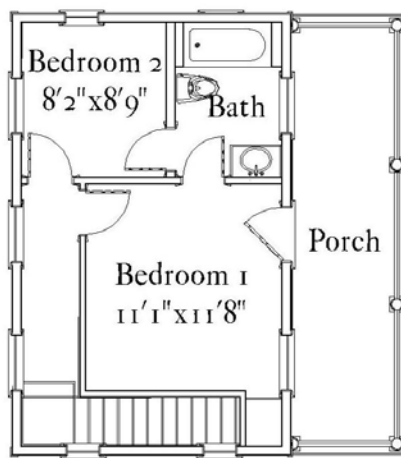
Factory-built homes from Russell Versaci

The 18th-century planters who settled the Carolinas built formal Georgian houses in the city of Charleston. But on their riverfront farms they built simple homes like our Lowcountry Cottage, raised on piers with Caribbean-style porches and tall windows.

Carolina Lowcountry Cottage



first floor



second floor

Summary

796 sf
 2 bedrooms, 1 bath
 First floor: 398 sf
 Second floor: 398 sf
 Porches: 338 sf