

In the early days of the New Republic, Greek Revival architecture became so popular that it was referred to as the national style. Our New Republic Cottage shows the temple front and columned porch that are hallmarks of the Greek Revival style.

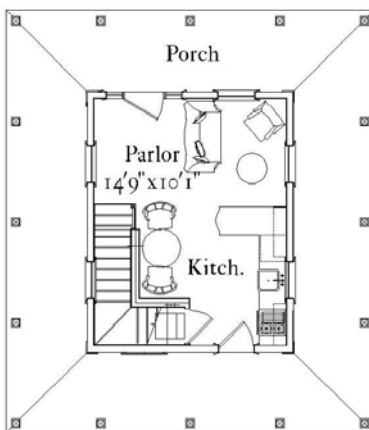
New Republic Cottage



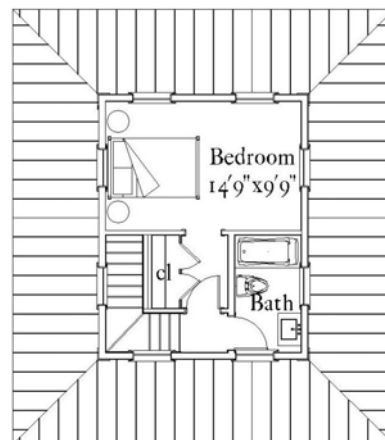
rear



front



first floor



second floor

Summary

630 sf
 1 bedroom, 1 bath
 First floor: 315 sf
 Second floor: 315 sf
 Porches: 600 sf