

# Pennywise

Factory-built homes from Russell Versaci

The early settlers of New York's Hudson Valley combined two European traditions — the flaring eave from the lowland countries and the farmhouse gambrel from the British Isles — to create the graceful bell-shaped roof we think of as Dutch Colonial.

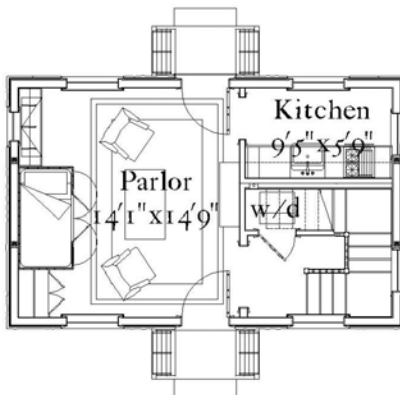
## Hudson Valley Cottage



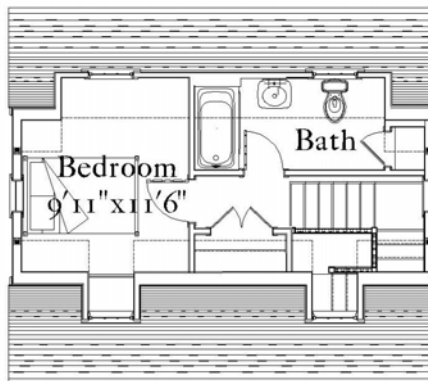
*rear*



*front*



*first floor*



*second floor*

### Summary

721 sf  
 1 bedroom, 1 bath  
 First floor: 398 sf  
 Second floor: 323 sf