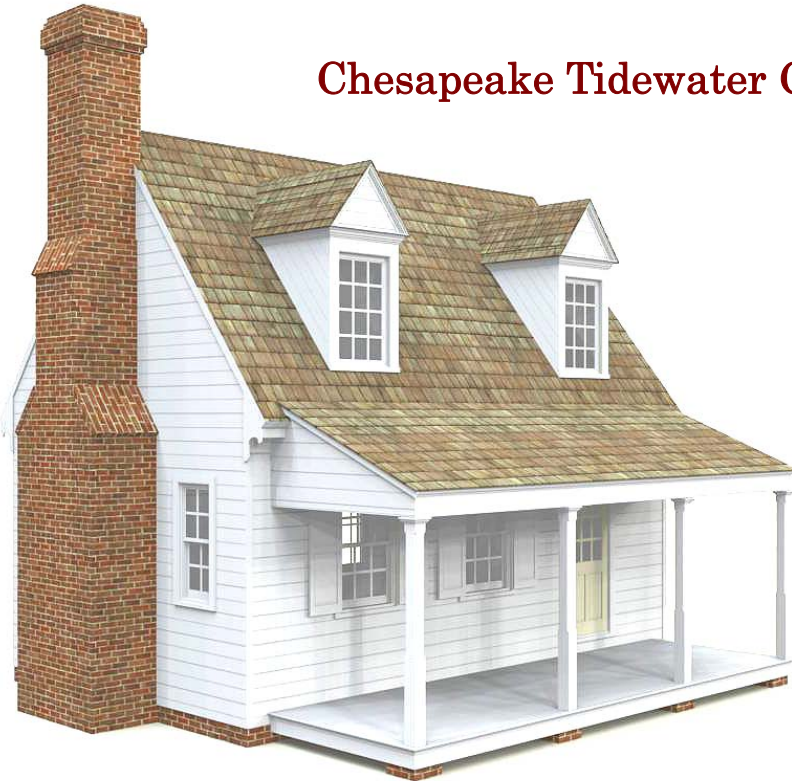


# Pennywise

Factory-built homes from Russell Versaci

The English who settled the Maryland and Virginia colonies built simple houses in a style adapted from the traditional cottages of the English midlands. Several restored examples of the Chesapeake Tidewater style can be seen in Colonial Williamsburg.

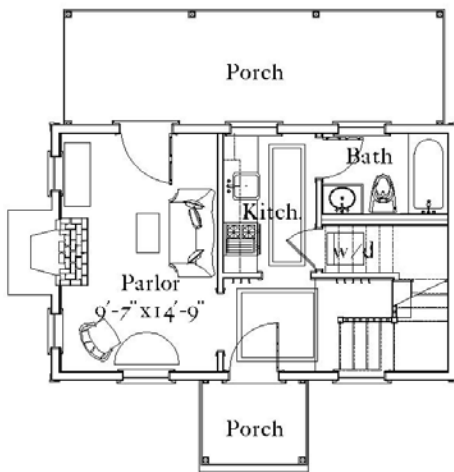
## Chesapeake Tidewater Cottage



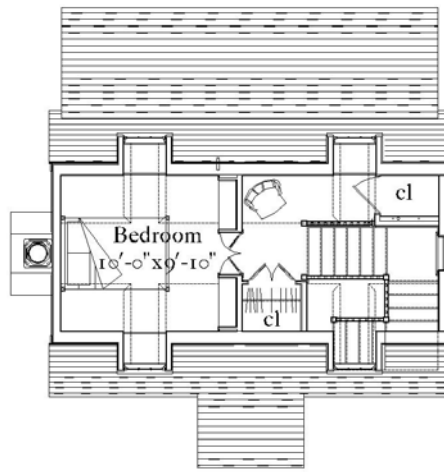
rear



front



first floor



second floor

### Summary

718 sf  
 1 bedroom, 1 bath  
 First floor: 398 sf  
 Second floor: 320 sf  
 Porches: 168 sf